

International Program in Engineering (IPE)



Introductions – The IPE Team

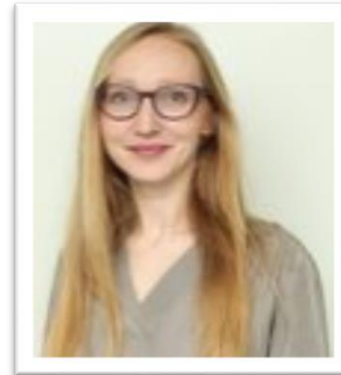
Prof. Dr. Andreas Schramm

Head of International Program in Engineering



Jennifer Loudon

IPE Administrative Support



Verena Bauer

IPE Administrative Support



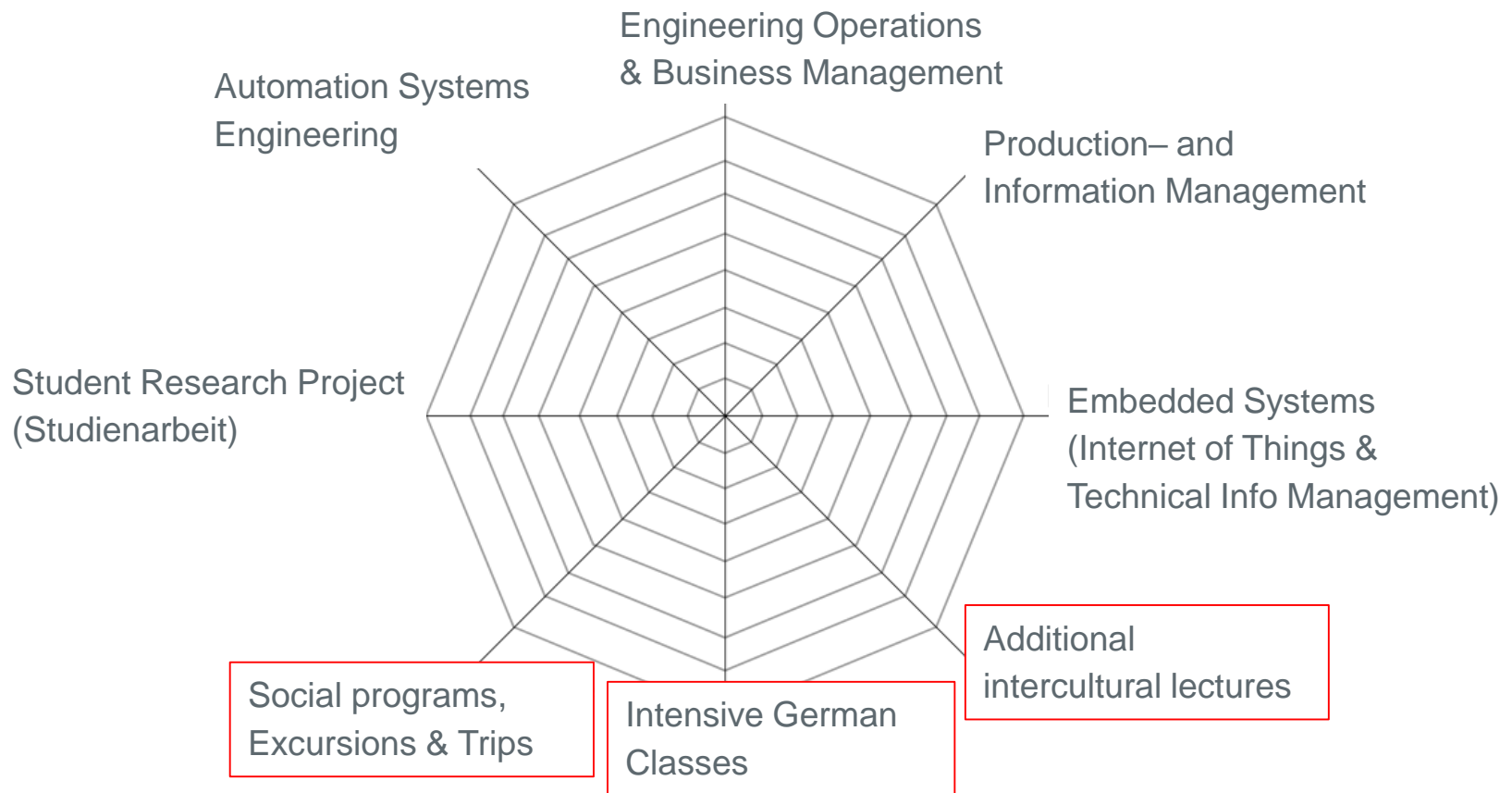
Objectives of the IPE



- Make it your best semester ever!
- Enhance your personality and soft skills
- Industry 4.0
- Intercultural teamwork in practice

International Program in Engineering – Overview

- » Specialization „ Production Systems Engineering“
- » Specific integrating & interdisciplinary modules („Broad‘ instead of ‚Deep‘)
- » Seminaristic approach, Team-oriented scientific work



IPE – Modules in Detail

Modules	ECTS per module	Teaching and learning contents
A.) Automation Systems Engineering	5	A1.) Extended concepts in automation A2.) "Integrated Industry": Seminar and Excursion A3.) Simulative engineering
B.) Engineering Operations & Business Management	5	B1.) Management of Industrial Processes B2.) Project Management B3.) International Business
C.) Production and Information Management	5	C1.) Business information systems in production and logistics C2.) Advanced concepts in production management C3.) Interdisciplinary seminar & lab practice
D.) Embedded Systems	5	D1.) Embedded Systems/IoT – Basics D2.) Technical Information Management D3.) Lab practice: embedded systems seminar
E.) Student Research Project	5	Individual student research project
F.) Social and Non-Technical Skills	5*	F1.) Intensive language course F2.) Additional intercultural lectures F3.) Social programs, excursions & trips
ECTS in total: International Students	30	

*only for international students



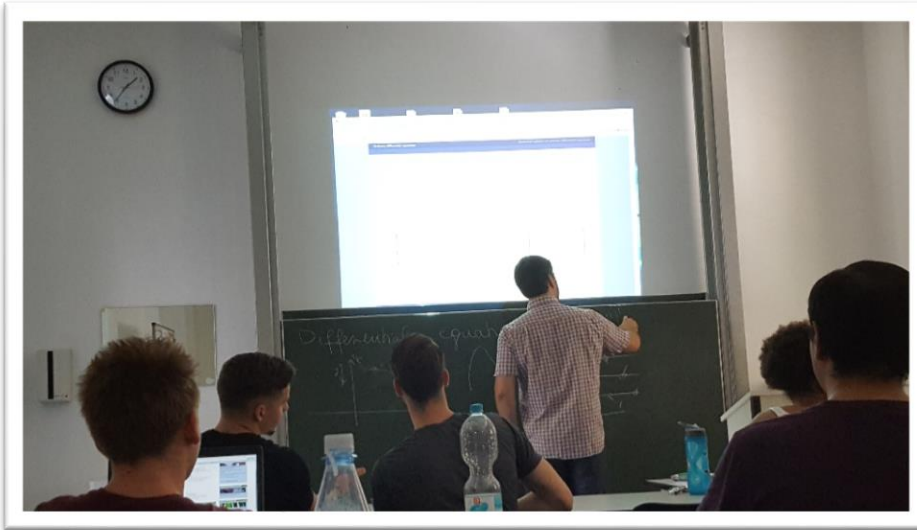
IPE – Calendar 2021 International students

(detailed schedule for 2021 t.b.c.)

Track length:	12 weeks + 1 week student research project
Start of the semester: International students:	5th April 2021
End of the semester: International students:	4th July 2021
<u>Semester dates in detail:</u>	
Engineering courses (Modules A-D)	5th April – 27rd June 2021
Student research project	28th June – 4th July 2021



Study in English language



- All lectures and exams in English

- International and multi-disciplinary faculty from USA, Russia, Hungary and, of course, Germany...



Acquire hands-on knowledge through company visits and related excursions *(dependent on Covid-19)*



- Excursion to Hannover Messe
- Company visits, e.g.
 - Car manufacturers (BMW, Porsche, Audi, Mercedes)
 - Brewery or Sektkellerei
 - Industrial manufacturers (e.g. Kärcher, Stahlwerk etc.)



- Team-building events, e.g.
 - Wine tour Gundelsheim
 - Climbing
 - Lasergame, ...
- Excursion fee only 100€

Teambuilding



- Establish lasting friendships with connections all around the globe (students from Hungary, Lithuania & Turkey currently nominated)

- Grow together as a group
approx. 15 Internationals
+
15 Germans
(MT, ET, INF, WIW, MB)



Develop intercultural skills



- Live and study together
- International House for all internationals
- Pow Wow & Running dinner
- Intercultural management class



What makes the IPE different from your regular semester?

International study style

- Orientation week with teambuilding and intercultural experiences (incl. intensive English language course)
- Lots of group work and interactive lectures



Active involvement beyond the classroom

- You will have a Germany “buddy” and take on a “tutor” task
- Company visits and related excursions during the semester

The „ideal“ IPE student...

- ...is interested in new fields of knowledge, e.g. Industry 4.0
- ...is excited about new experiences (cultures, language, travel, excursions, etc.)

Accommodation



- International students live together in our International House
- Fully equipped kitchen, bathrooms & shared facilities
- Single and shared rooms available
- Walking distance of town center and campus



* All pictures show International House / Mosbach Campus



What are the benefits for you?

- ✓ Prepare yourself for important global engineering topics
- ✓ Work with and learn from student engineers from other disciplines
- ✓ Become fluent in English
- ✓ Build long-lasting friendships and connections all around the globe
- ✓ Predetermined courses, arranged accommodation & full support from our dedicated team on a small, friendly campus
- ✓ Unique mix of study modules and excursions




Covid-19 & IPE

- Internationals have to
 - take a negative PCR test in 48 hours before arrival
 - complete quarantine before semester begins
- Quarantine suite in International House in case of infections
- Virtual classroom in International House allows international students to sit together for online lectures
- IPE – as many in-person lectures as possible
 - online lectures when necessary
 - Lab work as usual / according to DHBW rules
 - Outdoor excursions such as geocaching, ebikes, canoeing, wine tour
- Good experience with IPB Fall



How do I apply?

- <https://www.mosbach.dhbw.de/ipe>
- E-Mail your application to IP-Mosbach@mosbach.dhbw.de
- Application documents:
 - Application form with housing form and Financial Security Statement
 - Letter of motivation & CV
 - Grade transcripts



STUDENT APPLICATION FORM

To ensure your details can be easily read and copied, please type your answers and then print the form for signing and submission.

STUDENT STATUS:

☐ ERASMUS

☐ Other

INTERNATIONAL PROGRAM IN ENGINEERING
SPRING semester (April to July) - MOSBACH CAMPUS
Academic Year 20 / 20

STUDENT'S PERSONAL DATA

Family name: _____ First name (s): _____

Date of birth: 1 . November . 1980 Place of birth: _____

Nationality: _____ Gender: Female

Contact Details:

Permanent Address _____ Phone: _____

Street _____ Mobile phone: _____

City _____ Postal Code _____ E-mail: _____

Country _____

Emergency contact (while abroad): _____

Significant health problems the DHBW Mosbach should know about (e.g. allergies, etc.): _____

I am: ☐ vegetarian ☐ vegan

I eat pork: ☐ yes ☐ no



WE LOOK FORWARD TO RECEIVING YOUR APPLICATION



Any questions?

You can also email us at IP-Mosbach@mosbach.dhbw.de

